



Datasheet Plastic Collimator Lens CAW100

These data concern a full plastic a-spherical lens. It is for use as a collimator in combination with a diode laser. It can be mounted by use of glue or spring-loaded. Mechanical lock-mounting is not advisable because of possible distortions.

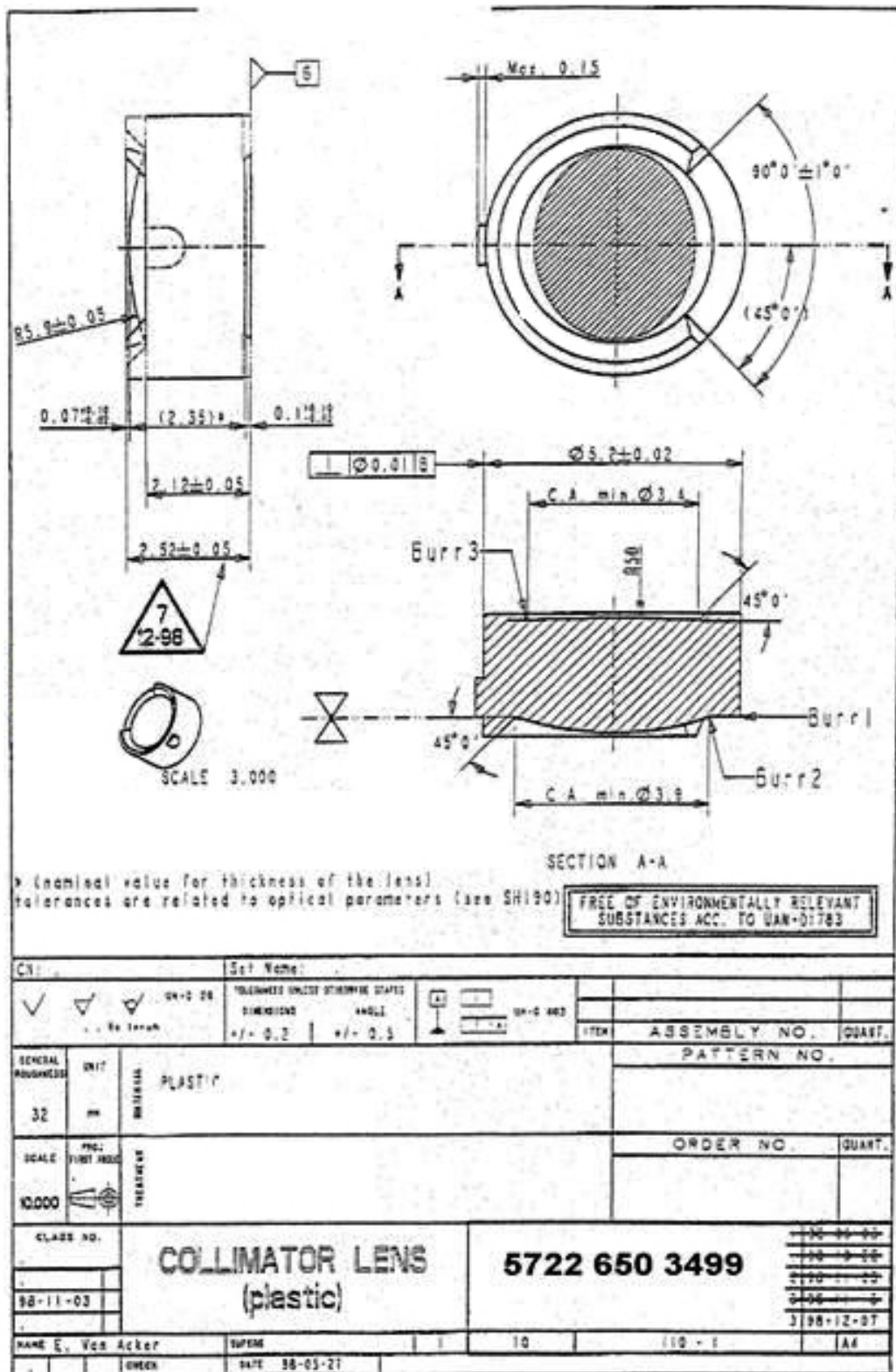
Parameters	Wavelength 785 nm	Unit
Design conditions		
<i>N.A.</i>	0.195	--
Clear Aperture <i>CA (Exit Pupil)</i>	3.9	mm
Clear Aperture <i>CA (Entrance Pupil)</i>	3.4	mm
Optical parameters		
Focal Length @ 785 nm	9.85	mm
<i>RMS</i> mean	on axis	40
<i>RMS</i> max. ($\pm 3\sigma$)	on axis	50
Optical Tolerance	0.15	mm
Field Radius	0.15	mm
Mechanical parameters		
Mounting hole diameter D_{mh}	$\varnothing 5.20 (+ 0.1)$	mm
Environmental stability		
Storage Temperature	0 to 65	°C
Operating Temperature	0 to 65	°C

General Data:	
Transmission [%]:	> 80
Lens Material:	COC

Specifications subject to change without notice.

© Helvoet Rubber & Plastic Technologies NV. All rights reserved. Reproduction prohibited without written permission from the copyright owner

© Helvoet Rubber & Plastic Technologies NV. All rights reserved. Reproduction prohibited without written permission from the copyright owner



T.P.D.
dd 7 DEC. 1998